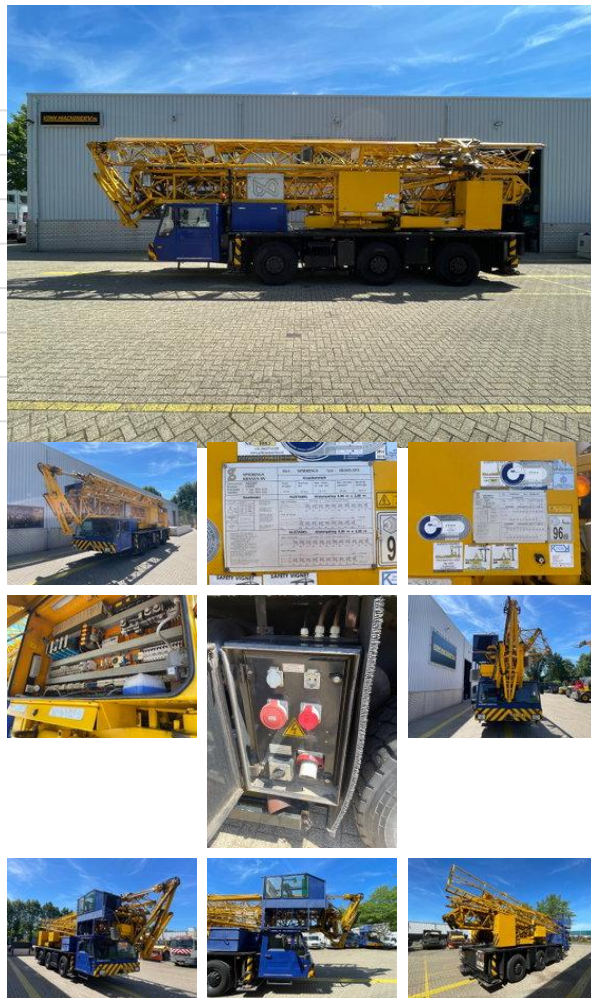


Spierings SK 365 AT3

General characteristics

Brand	Spierings
Subcategory	Mobile tower
Meter reading	192.053km
Year of construction	1998
Hours displayed	25341
Colour	Blue
Condition	Used
General state	Very good
CE marking	And



Properties

Single weight	35.850kg
Max. lifting capacity	5.000kg
Lifting height	3.040cm

Technical specifications

Number of axes	2
Axis configuration	4x4
Drive	wheels

Description

= Additional options and accessories = - Counterweights - Hook blocks = Remarks = Spierings SK365-AT3 * 1998 * 25,341 operating hours * Diesel and 400 Volt drive * 3 axles * Manual transmission * 6x6x4 drive/steering * Lifting capacity 5,000 kg * Point load 1,700 kg * 33.4 lifting height * 30.4 meters horizontal reach * 192,053 km * Includes documents and maintenance history = More information = Delivery terms: EXW Production country: NL Please contact Vink Machinery (+31 620075567, sales@vinkmachinery.nl) for more information

Accessories

- All wheel drive