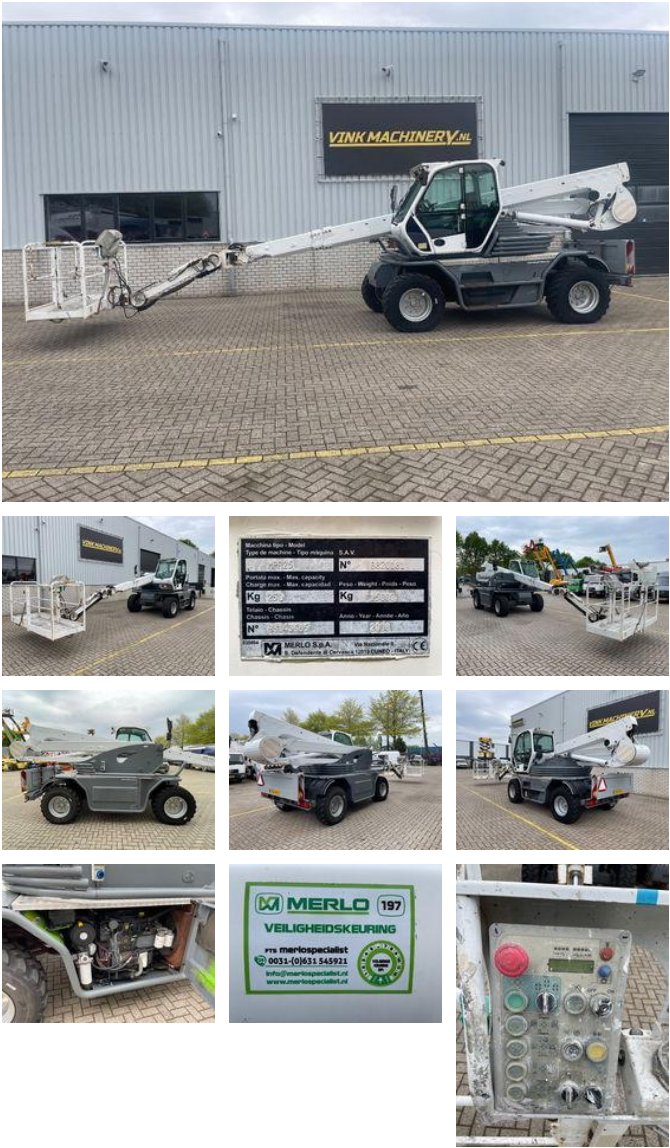


Merlo MPR 25

General features

| | |
|-------------------|-------------------------------|
| Brand | Merlo |
| Subcategory | Articulated boom lift wheeled |
| Construction year | 2008 |
| Hourmeter reading | 3884 |
| Color | White |
| Condition | Used |
| General condition | generalCondition.average |
| Fuel | Diesel |



Characteristics

| | |
|------------------|-------------|
| Empty weight | 15.000kg |
| Lifting capacity | 250kg |
| Mast type | Articulated |

Merlo MPR 25

Description

Merlo MPR 25 * 2008 * Diesel drive * 3884 working hours * 25 meter working height * 15 meter horizontal reach * 40 kilometers per hour * 4x4x4 steering * 250 kg lifting capacity * 15000 kg own weight * Inspection until June 2025 * Including documents = More information = Delivery terms: EXW Transport dimensions (LxWxH): 7,6x2,4x3 Latest inspection: 2024-06-14 Production country: IT Please contact Vink Machinery (+31 620075567, sales@vinkmachinery.nl) for more information

Accessories