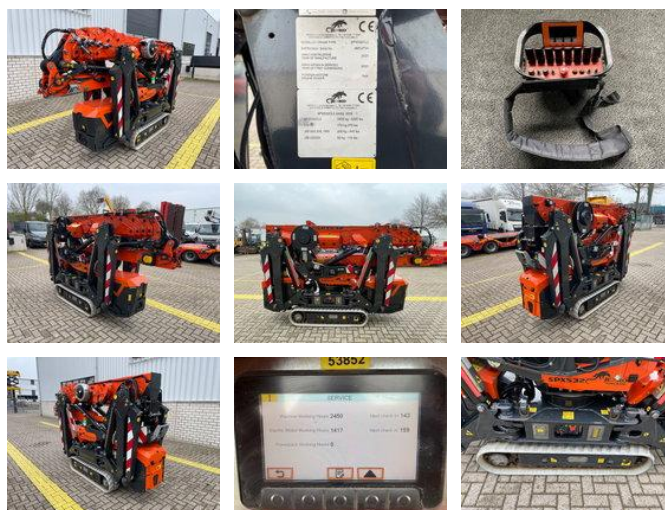


## Jekko SPX 532 CL2

### General features

|                   |            |
|-------------------|------------|
| Brand             | Jekko      |
| Subcategory       | Mini crane |
| Construction year | 2020       |
| Hourmeter reading | 1417       |
| Condition         | Used       |
| General condition | Very good  |
| CE marking        | Yes        |



### Characteristics

|                  |         |
|------------------|---------|
| Empty weight     | 2.820kg |
| Lifting capacity | 3.200kg |
| Lifting height   | 1.730cm |

# Jekko SPX 532 CL2

## Description

= Additional options and accessories = - Hook blocks = Remarks = Jekko SPX 532 CL2 \* 2020 \* Lithium battery drive \* 1,417 operating hours \* 17.3 meters working height \* 14.8 meters horizontal reach \* 3,200 kg lifting capacity \* Remote Control \* Automatic outrigger \* Jib 1000.2HL.1MX \* Jib 1200GX \* Total weight 2,820 kg \* Including documents = More information = Delivery terms: EXW Transport dimensions (LxWxH): 3,505x0,77x1,96 Latest inspection: 2025-11-20 Production country: IT Please contact Vink Machinery (+31 620075567, sales@vinkmachinery.nl) for more information

## Accessories