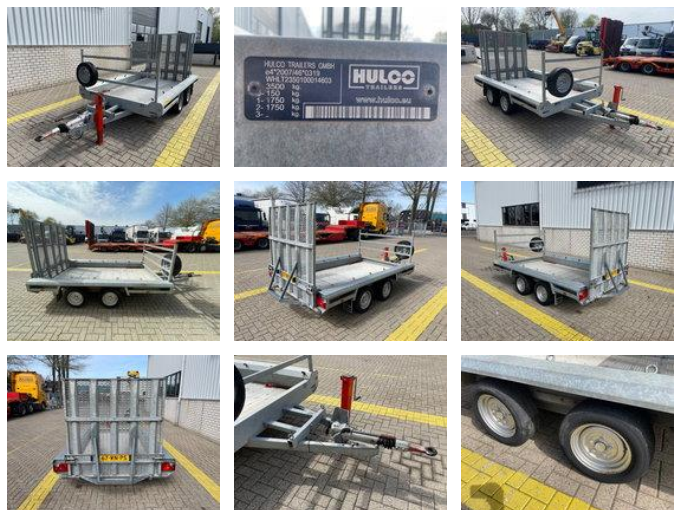


## Hulco Terrax-2 Machinetransporter

### General features

Brand	Hulco
Subcategory	Flatbed
Construction year	2016
Condition	Used
General condition	Very good



### Characteristics

Load capacity	2.770kg
GVW	730kg

# Hulco Terrax-2 Machinetransporter

## Technical specifications

Number of axes

2

## Description

Hulco Terrax-2 Machine Transporter \* 2016 \* Internal dimensions 3x1.5x0.25 \* 2770 KG load capacity \* Towing eye easily interchangeable = More information = Vehicle's outer dimensions: 5x2x0,65 Cargo space dimensions(LxWxH): 3x1,5x0,25  
Production country: NL Please contact Vink Machinery (+31 620075567, sales@vinkmachinery.nl) for more information

## Accessories