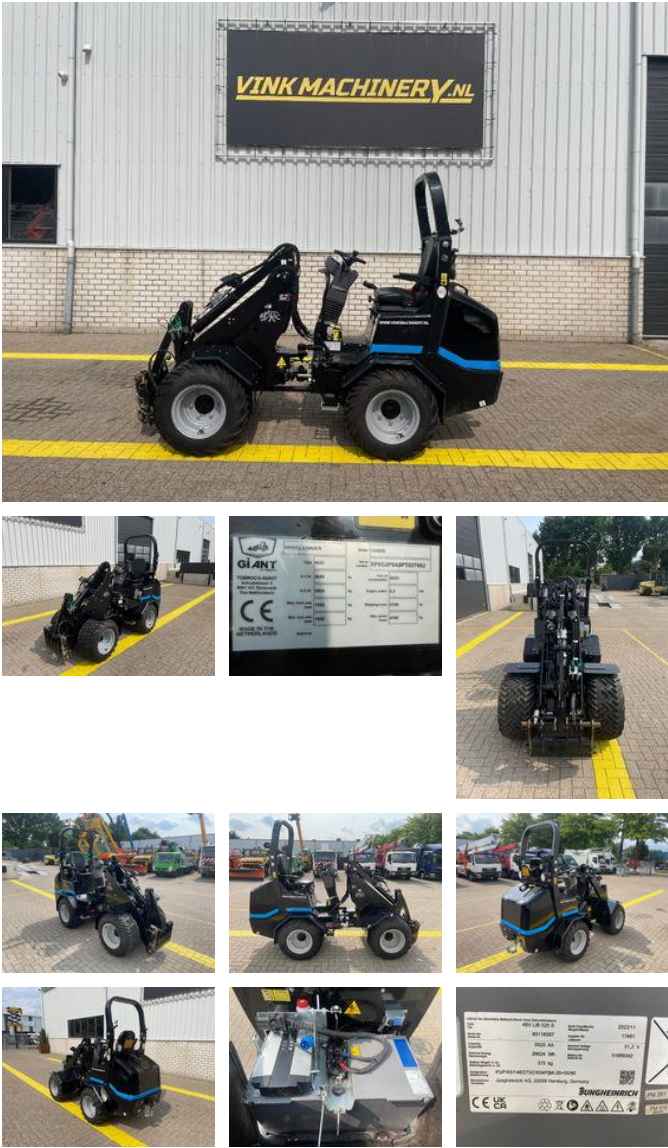


Giant G 2200 E

General features

Brand	Giant
Subcategory	Wheel loader
Construction year	2023
Hourmeter reading	142
Color	Black
Condition	Used
General condition	Good
Fuel	Electric



Characteristics

Empty weight	2.200kg
Lifting capacity	1.650kg

Giant G 2200 E

Technical specifications

Drive

wheels

Description

= Additional options and accessories = - Auto / hydraulic quick coupler - Mudguards - Quick coupler = Remarks = Giant G2200E * 2023 * 142 working hours !!! * Battery drive * Lithium-ion battery 520 AH 48V * Internal charger * Earth bucket or tile rake available at extra cost * 3 driving speeds * Double-acting function at the front * Anti-theft system with access code * Work lights * Hydraulic quick-change * X - trac tires * Ball towbar * Equipped with Dutch license plate = More information = Chassis type: articulated Number of owners: 1 Front tyres / undercarriage remaining: 95 Rear tyres remaining : 95 Delivery terms: EXW Transport dimensions (LxWxH): 3,2x1,3x1,8 Production country: NL Please contact Vink Machinery (+31 620075567, sales@vinkmachinery.nl) for more information

Accessories